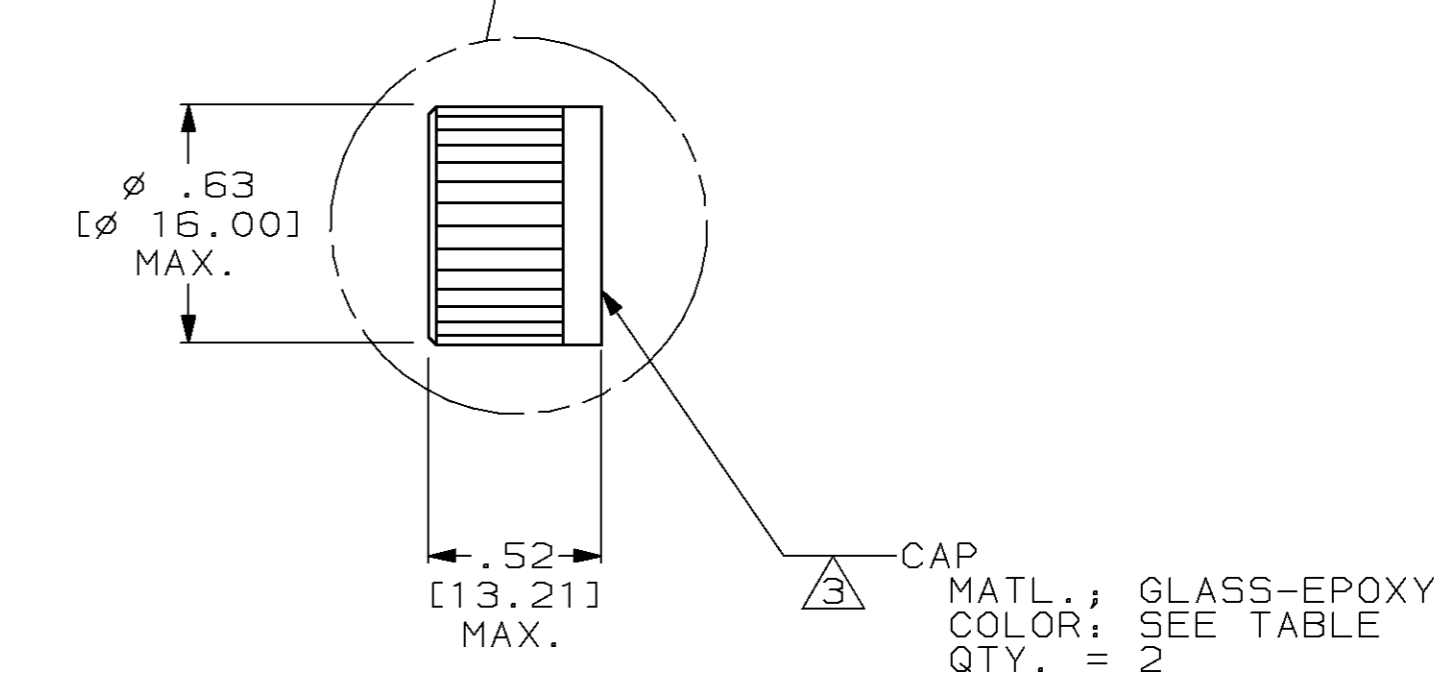
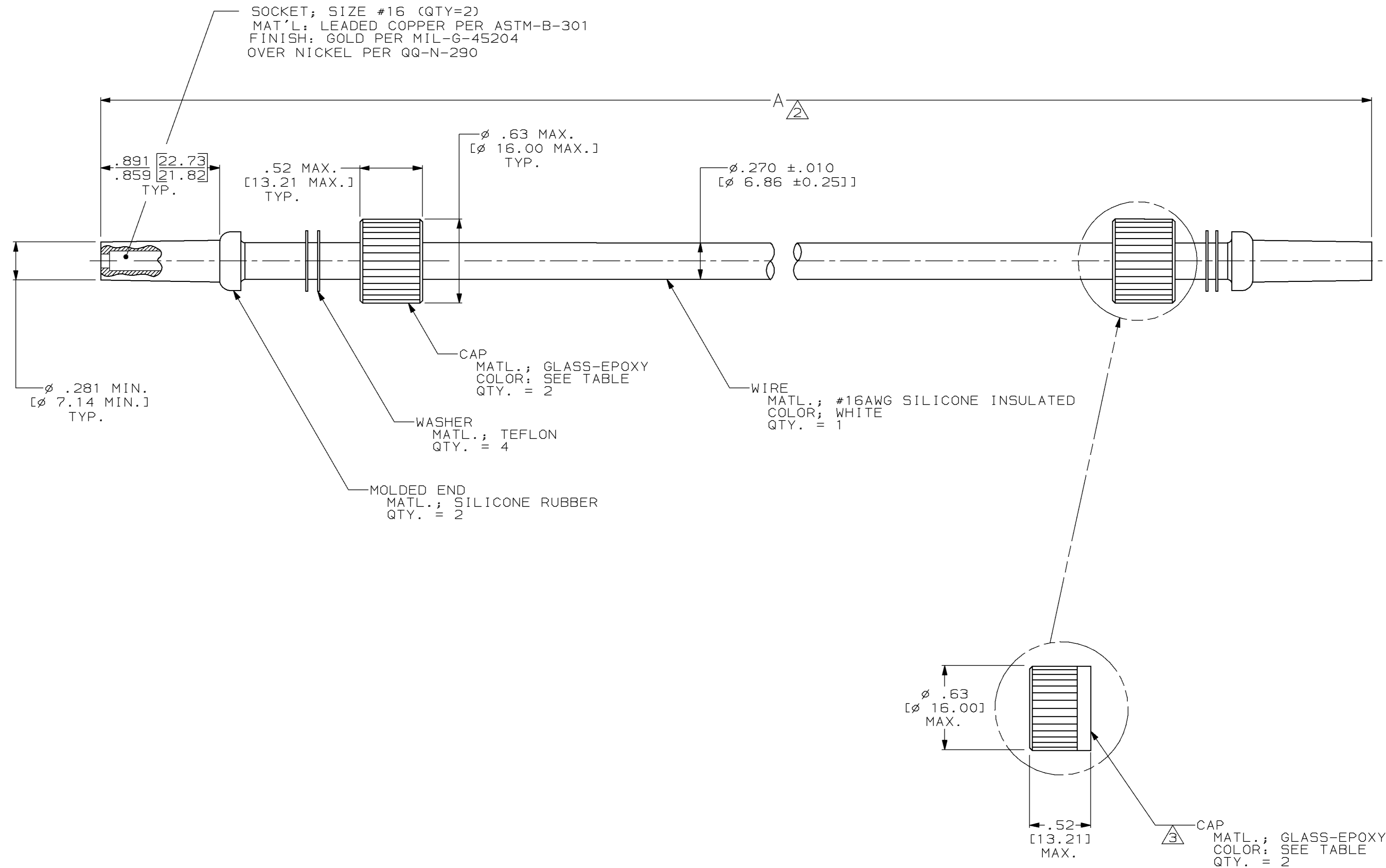


PART NO	A	CAP INFO	
863702-1	8.00 [203.2]	RED $\Delta_3$	OBSOLETE
863702-2	6.00 [152.4]	RED $\Delta_3$	OBSOLETE
863702-3	5.00 [127.0]	RED $\Delta_3$	OBSOLETE
863702-4	9.00 [228.6]	RED $\Delta_3$	OBSOLETE
863702-5	60.00 [1524.0]	RED	OBSOLETE
863702-6	33.50 [850.9]	RED	OBSOLETE
863702-7	34.50 [876.3]	RED	OBSOLETE
863702-8	35.50 [901.7]	RED	OBSOLETE
863702-9	81.00 [2057.4]	RED	OBSOLETE
1-863702-0	73.00 [1854.2]	RED	OBSOLETE
1-863702-1	89.00 [2260.6]	RED	OBSOLETE
1-863702-2	18.00 [457.2]	RED	OBSOLETE
1-863702-3	12.00 [304.8]	RED	-
1-863702-4	6.25 [158.7]	RED $\Delta_3$	OBSOLETE
1-863702-5	120.00 [3048.0]	RED	OBSOLETE
1-863702-6	24.00 [609.6]	RED	OBSOLETE
1-863702-7	36.00 [914.4]	RED	-
1-863702-8	42.00 [1066.8]	RED	OBSOLETE
1-863702-9	96.00 [2438.4]	RED	OBSOLETE
2-863702-0	72.00 [1828.8]	RED	OBSOLETE
2-863702-1	48.00 [1219.2]	RED	-
2-863702-2	84.00 [2133.6]	RED	OBSOLETE
2-863702-3	240.00 [6096.0]	RED	OBSOLETE
2-863702-4	30.00 [762.0]	RED	OBSOLETE
2-863702-5	15.00 [381.0]	RED	OBSOLETE
2-863702-6	180.00 [4576.0]	RED	OBSOLETE
2-863702-7	144.00 [3657.6]	RED	OBSOLETE
2-863702-8	21.00 [533.4]	RED	OBSOLETE
2-863702-9	216.00 [5486.4]	RED	OBSOLETE
3-863702-0	160.00 [4064.0]	RED	OBSOLETE
3-863702-1	22.00 [558.8]	RED	OBSOLETE
3-863702-2	31.00 [787.4]	RED	OBSOLETE
3-863702-3	20.00 [508.0]	RED	OBSOLETE
3-863702-4	54.00 [1371.6]	RED	OBSOLETE
3-863702-5	13.00 [330.2]	RED	-
3-863702-6	98.50 [2501.9]	RED	-
3-863702-7	10.00 [254.0]	GREEN $\Delta_3$	-



- MARK PER MIL-STD-130
- TOLERANCE: UP TO 24" [609.6] = ±.12" [±3.0], 24" [609.6] & UP = ±1%
- USED WITH LEADS HAVING "A" DIMENSION LESS THAN OR EQUAL TO 10.00 [254.0].
- OPERATING CONDITIONS: 20KVDC, SEA LEVEL TO +70,000 FEET, -55°C TO +125°C
- TO MATE WITH AMP LGH-1 RECEPTACLE WITH .88 [22.3] BARREL DEPTH.

DO NOT SCALE PRINT. UNLESS SPECIFIED DIMENSIONS IN INCHES [mm] TOLERANCES ON: 2 PLC DEC ± - 3 PLC DEC ± .005 [0.13] ANGLES ± -	DR <i>W.Leufert</i> 10-6-89 CHK 3-1-90 G. SCHAEFFER APPD 3-1-90 G. SCHAEFFER APPD 3-1-90 W. LEUFERT	AMP INCORPORATED Harrisburg, Pa. 17105		
SEE CALLOUTS	PRODUCT SPEC -	ELECTRICAL LEAD, DOUBLE MOLDED END, LGH-1 (#16)		
FINISH SEE CALLOUTS	APPLICATION SPEC -	SIZE <b>D</b>	CAGE CODE 00779	DRAWING NO 863702
	WEIGHT -	SCALE 2:1	SHEET 1 of 1	